



**CAREO VALVE®**

**Corporate Presentation**

# Introduction

# About Us

- ✓ **Total Valves Management Service**
- ✓ **Global Operations**
- ✓ **Energy, Utilities, Oil & Gas, Marine & Industrial**
- ✓ **Onshore - Offshore**
- ✓ **Workshops Operating in Key Countries**
- ✓ **Head Office in Italy**

# What We Do

The Company provides valve repair, supply, testing, engineering support, valves diagnostic, condition monitoring, inventory management, training and a lot more to valve users, from energy, utilities, marine and manufacturing sectors as well as supplying services worldwide through:

- 360 degrees **worldwide service**  
(care-o-valve spares parts and urgent assistant system)
- **direct stable organization** in the key countries  
(care-o-valve workshops system)
- **mobile workshop services** (care-o-valve mobile workshop system)
- **unmanned aerial vehicle inspection**  
(care-o-valve UAV inspection)

# Our Services

***Diagnostic Equipment***



***OEM Parts & Procedures***



***Local Support & Inventory***



***Qualified Field Support***



***Maintenance Records***



***Global Program***





# **This is Opportunity!**



- **Valves Stored with No End Covers**
- **Unfavorable Environmental Conditions**

# Customer Approvals



# Authorised Valve Brands



**Note:** The above are Tier One (1) Valve Brands across the World.



# Our Strength

“Our strength is facing different challenges every day, adapting ourselves in every situation taking quick time critical decision avoiding waste of time and money.”

**Davide Lisignoli, Founder.**

- **Quality System:** Quality Management systems and International standards applied across all shop floor staff and service/repair team.
- **Global Footprint:** Globally accepted and authorized service workshop, experience and exposure working in various critical environment across the world.
- **Competent Personnel:** Young, skilled, highly trained and motivated team of technicians and engineers, ready to travel on site 24 hours a day and 7 days a week and qualified to operate onshore and offshore (OPITO certification, offshore safety induction and emergency training included HUET and EBS 5700).

# The Worldwide Service



# Abu Dhabi

# Abu Dhabi Facility

- In the last years, to be as close as possible to the problems and offer the fastest solution, **Care-O-Valve** created and manages a service network based on workshops operating in key countries for the oil & gas industry.
- In January 2012 a joint venture agreement was signed between **Care-O-Valve** and **Emdad** in Abu Dhabi UAE. Workshop breakeven in less than 1 year.
- Today **Emdad** & **Care-O-Valve** is serving the Oil & Gas industry with a whole range of valve related services.



# Abu Dhabi Facility

- These services are provided in **Emdad Valve Testing and Maintenance Workshop in Musaffah (M45)** where a complete inspection, repair, testing, maintenance services for all kinds of valves and actuators, irrespective of type, size and class are performed.
- There is also a Process Manual Valve Repair Program for Refineries, Chemical Plants, Power Generation and Pipelines. This Workshop has an in house Sandblasting and Painting Booth.

# Workshop Facilities



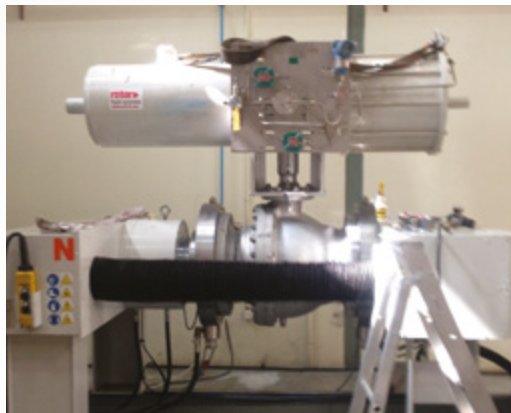
**Overview of the Plant**



**Assembly Area**



**QA/QC Area**



**Testing**

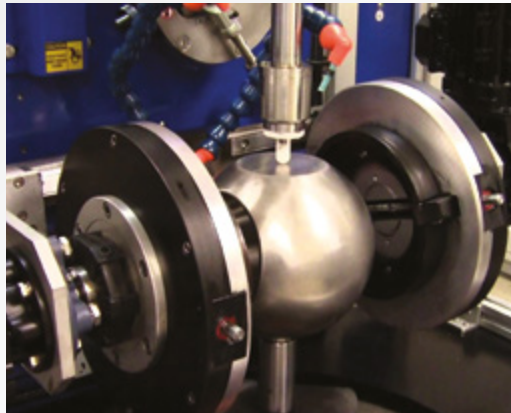


**Machining**



**Testing**

# Workshop Facilities



**Lapping Activity**



**Welding Area**



**Machining Area**



**Blasting Booth**



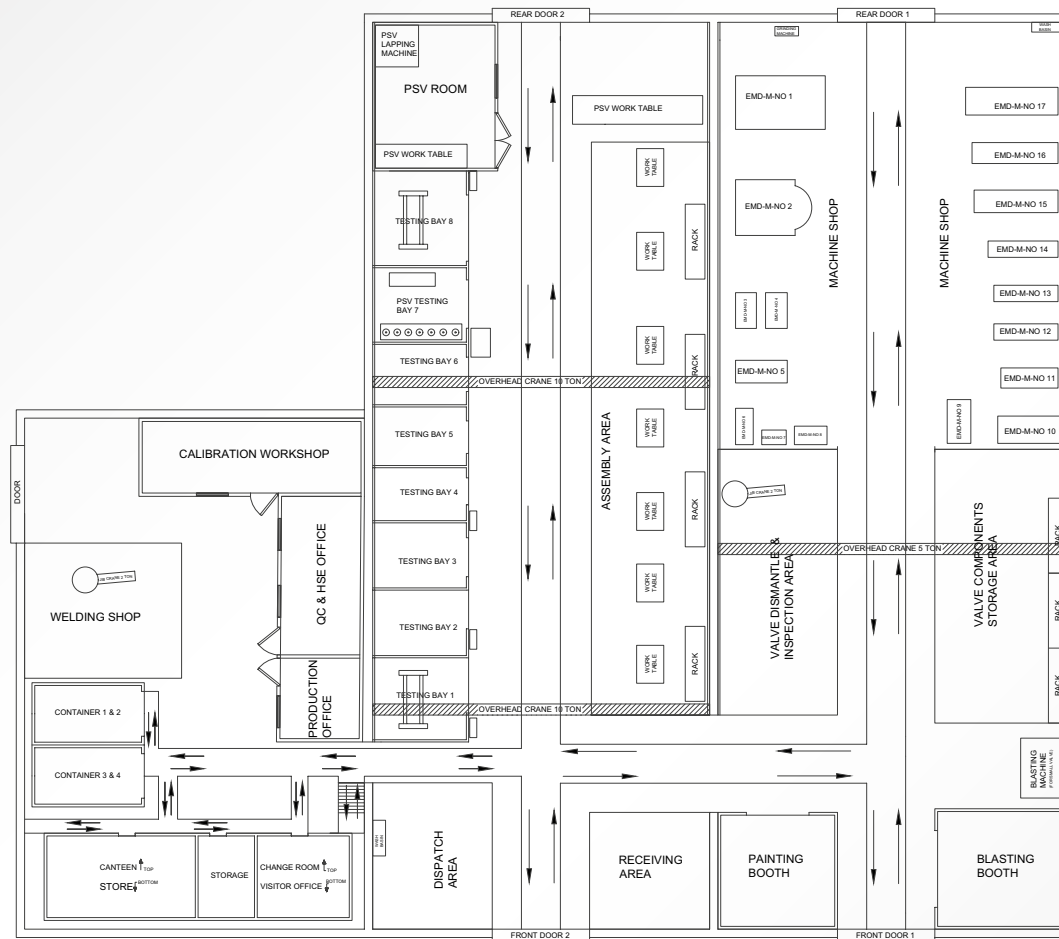
**Calibration Room**



**Painting Booth**



# Workshop - Floor Plan



**Note:** A minimum size of 2,000 SQM.



# Scope of Services

Complete valve inspection, machining, repair, testing, packing and documentation services for all kinds of valves and actuators, irrespective of type, size and class.



**Valve  
Inspection**

**Machining**

**Testing**

**Process Manual  
Valve Repair**

**Valve Sealing,  
Flushing etc.**

Field Machining, Technical Bolting,  
Turnaround Shutdown and outage Services,  
Fugitive Emissions Control.

# Detail Scope of Services

- Installation, commissioning, supervision
- On-Site Testing and Calibration
- Diagnosis and on-site repair
- Shut down and project management
- Training programs on operation & safety
- Spare parts supply
- Valve modifications:
  - Conversion from Soft Seal to Metal Seat
  - Modification from Manual-gearbox Operation to Actuation
  - Seal Technology Upgrading
- Flange re-facing, in-line, valve seat restoration, pressure seal restoration, machining services  
Valve Diagnostic Technologies.

# Detail Scope of Services

- Documentation and Record Keeping
- Wellheads and Christmas Trees Inspection, Testing and Repair under API Certification
- Choke Valves Inspection, Testing and Repair
- Weld Overlay - Inconel, Satellite and CrMo
- Welding capabilities TIG, MIG & ARC through Carbon Steels to High Alloys
- Certified specialist pressure welding.
- Preventative systems - inline testing
- PSV test rigs - onshore/offshore
- Sealant & Lubrication injection services
- Control Valve diagnostics & services
- PSV Online Test
- Instrument Calibration Service

# Korea



# Korea Facility

- In response to the continuously expanding South Korean Oil&Gas business, in May 2018 **Care-O-Valve** opened a new workshop in Busan, South Korea;
- The brand new 1000 m<sup>2</sup> fully equipped workshop is strategically located 1 hour drive from HHI offshore yard and 45 minutes drive from Samsung Heavy Industries and DSME yard.



# Korea Facility

- Care-O-Valve Korea is managed by experienced italian **Care-O-Valve** engineers and is capable of providing a full range of valve related services:
  - Manual and actuated valve refurbishment and modification, sizes 1" to 48";
  - Complete valve and actuator inspection, troubleshooting and failure analysis;
  - Valve hydro testing and nitrogen testing up to 1000 bar;
  - Tanks for submerged gas tests;
  - Lifting capacity up to 30 tons;
  - Fully trained and experienced workforce;
  - Compilation of detailed repair reports;
  - Online PSV testing;
  - Committed to health, safety and environment;

# Korea Facility

- **Care-O-Valve Korea** will be authorized by all the main valve manufacturers, thus allowing all other Care-O-Valve workshops to provide their services to the same manufacturers and their end users.

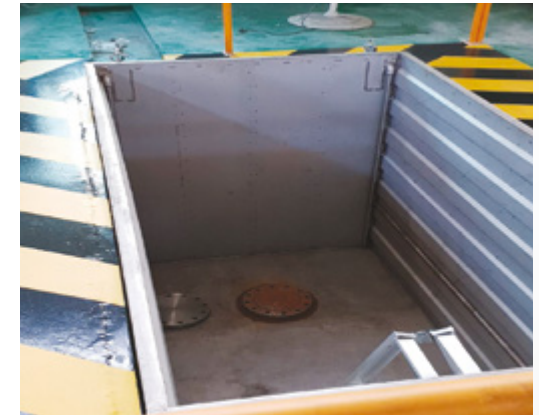
# Workshop Facilities



**Overview of the Plant**



**Overhead Crane**



**Cryogenic Tank**



**Test Bench #1**



**#2**



**#3**



**#4**



# Site Service

**Care-O-Valve Korea** also provides a full range of valve related site services:

- On site troubleshooting & failure analysis;
- Detailed daily reports to customers;
- Supervision and technical support during valve installation and commissioning (functional test, leak test, pressure test);
- On site repairs and modifications;
- Valve trainings to workers and project staff;
- Valve preservation;
- Valve emergency sealing;
- Valve engineering consulting (material selection, bolting stress calculations);
- Consulting in spare parts selection;
- On site flange repair with portable flange refacing machines.

# Value Added Services

# Mobile Workshop

- After a long field experience Care-O-Valve has understood the importance to be ready, when required, to take action also in the remote and high risk areas with all the technical capacities developed over the years.
- To be ready Care-O-Valve has designed a mobile container work shop (20 ft & 40 ft) full equipped for any kind of requirement and operation, suitable for onshore & offshore facilities.
- The Care-O-Valve Mobile Workshop could be an opportunity of development connected to the workshop business.
- The workshop is usually provided with all the necessary employees and tools necessary for the specific activities.

# Mobile Workshop Model

## Mobile Workshop

After a long field experience **Care-O-Valve** has understood the importance to be ready, when required, to take action also in the remote and high risk areas with all the technical capacities developed over the years. To be ready Care-O-Valve has designed a mobile container workshop (20 ft & 40 ft) full equipped for any kind of requirement and operation, suitable for onshore & offshore facilities.

The workshop is usually provided with all the necessary employees and tools necessary for the specific activities.  
Power requirement: 30 KW  
Certification:  
• Generator Compliance to Zone II  
• Overhead Crane Lift Rating Certification  
• Jib Crane Lift Rating Certification  
• Container Maximum Load Rating Certification  
Each Mobile Workshop includes:

### Air compressor, screw type + Refrigeration Air Dryer + Hyperfilter & Vertical Tank

**Model:**  
ROTAR QUADRO 1510  
Fini, Italy  
**Capacity/Size:**  
Air flow: 52.6Cfm,  
1490L  
Min, 93m3/hr  
Free air delivery:  
894L/MIN,  
31.56Cfm  
Max. pressure:  
10 bar.  
**Vertical Tank:**  
300 Ltr, 10 bar 1

### Diesel Engine Generator.

**Model:**  
YH550DTLS-5B Yanmar, Japan  
**Capacity/Size:**  
Type: Enclosed, Silent type.  
Voltage: 220-380V.  
Fuel tank capacity: 85 liters.

### Pillar Drilling & Bench Grinder.

**Capacity/Size:**  
Electrically operated  
¾" drill capacity.

### Center Lathe.

**Capacity/Size:**  
Medium Size  
Swing over bed  
10" Dist B/W  
centers -18".

### Work Benches.

**Capacity/Size:**  
5ft L x 3ft  
W x 3ft H.

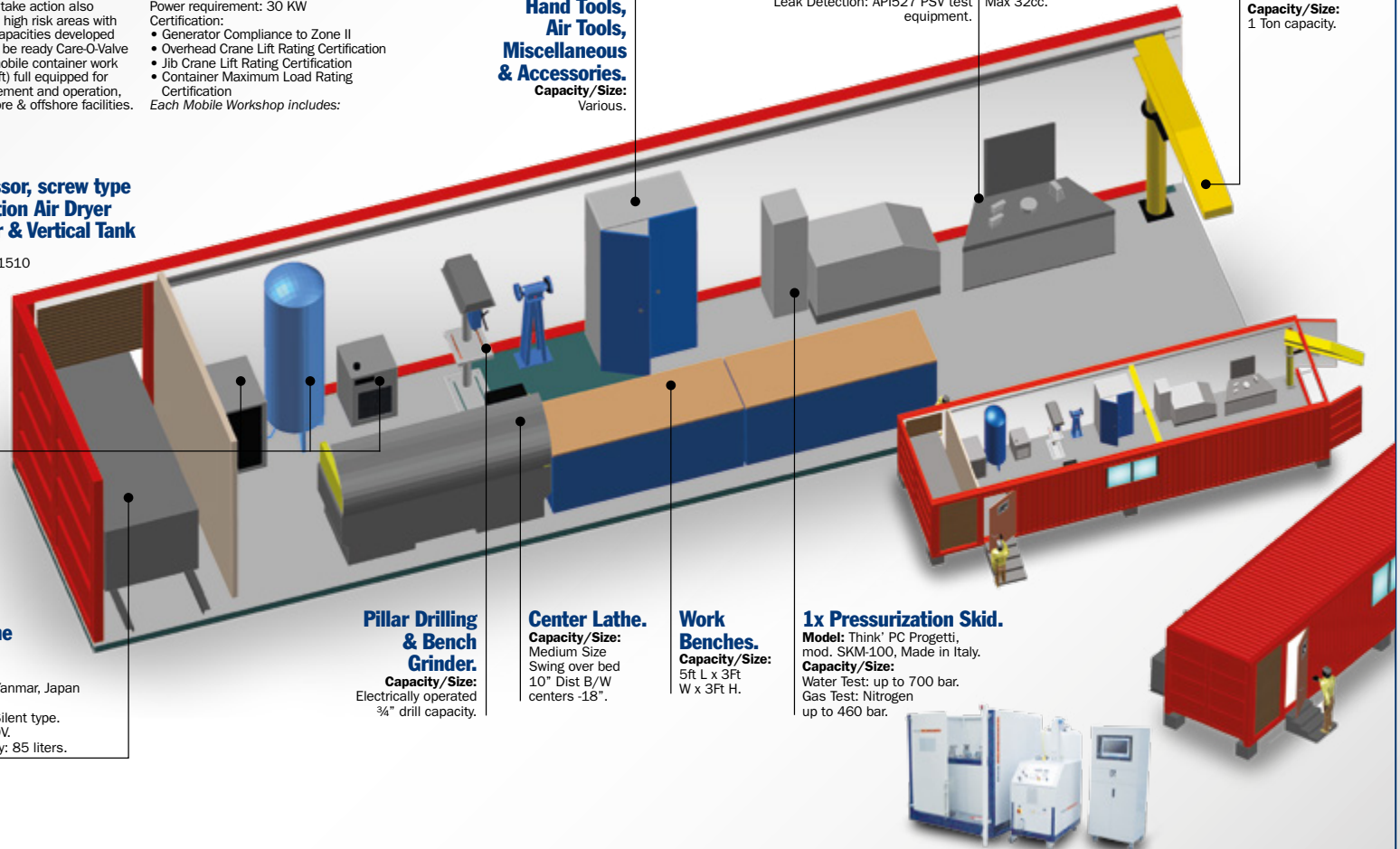
### Safety Valves Test Rig.

**Capacity/Size:**  
From 1" to 16".  
Water Test: up to 435 bar  
Gas Test: Nitrogen up to 435 bar.  
Leak Detection: API527 PSV test equipment.

**Ansi Bubbler Digital  
Bubbles Counter:**  
3bls/sec. max  
Water Column  
Max 32cc.

### Overhead Crane and Jib Crane.

**Capacity/Size:**  
1 Ton capacity.





# Unmanned Aerial Vehicle

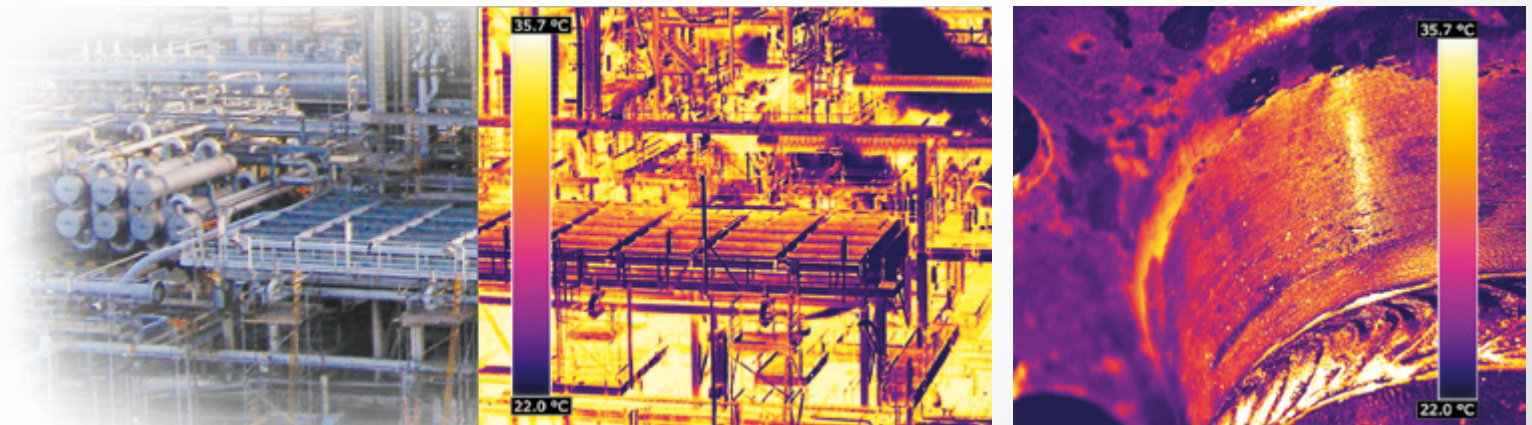


- We are fully equipped to provide close visual and thermal inspections and surveys for Oil & Gas plant, Chemical Industries, Power Utilities, Civil Building and any kind of buildings and landscape.
- Our qualified personnel can provide you full detailed reports, thanks to our software, HD images and videos that will allow you to take critical decision and aiming to money saving.



# Unmanned Aerial Vehicle

- Thermal imaging can be used to locate overheating spot in any kind of plant, facility and construction. The camera integrate to a UAV allows to reach the highest point minimize the risk, avoiding working at heights and dangerous conditions.
- **Care-O-Valve** is also investing in thermal camera for gas detection surveys. Thanks to the latest technology of the sector thermal camera can also reveal gas leakage from valves, flanges, fittings or any other components.



# Care-O-Valve Qualifications

**Care-O-Valve** is ISO9001 and ISO14001 certified. Our control quality department is steadily committed in following and assisting any internal process to guarantee the maximum quality level to our customers.

Mobility, Qualified Service, Accrued Experience are the factors driving to **COST SAVING**. Our personnel is highly qualified and ready for your service wherever you need.





**Italy**

Via Fatebenefratelli, 30  
20121 Milano, Italy.

Ph.: +971 50 6920823  
Ph.: +39 346 8663510

**Abu Dhabi**

EMDAD L.L.C, P.O. Box 4118,  
Abu Dhabi, U.A.E.

Ph. : +971 50 6920823

**South Korea**

7, Golden root-ro 129beongil,  
Juchon-Myeon, Gimhae 621-842  
Busan

Ph. : +39 349 9316699

